



Innovators In  
**AI, IOT, Embedded System**

# About Us

- A Singapore SME since 2004
- More than 3 decades of Product Development experience
- Customized product/solution development
- AI Product in Predictive Maintenance, Computer Vision
- Data Centre Security Rack Solution Product



# Expertise

---

- **Embedded System**

- RISC Processor, Microcontroller
- Linux OS, Drivers Development

- **IOT**

- LoRa, NB-IOT, LTE Cat M, Bluetooth BLE, ZigBee, Wi-Fi, UHF RFID.
- Sensors – Audio, Accelerometers, Gas...etc

- **AI**

- Computer Vision – Video Analytics
- Signal Processing using Sensors Data



# Customised Product/Solution Development Portfolio

---



# Commercial Projects for Customers

---



# Portfolio – Consumer



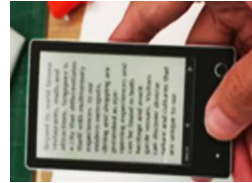
Smart Helmet



BLE Padlock



Smart Bag



Smart Hotel Key Card



EMS Gym Wear



Remote Control



USB Charger



Gaming Mouse



Pen Remote Controller

# Portfolio – Industrial



Lassalle Access System



IBP Access Reader



SMRT Access Reader



Multi Camera PC



Soil Detector



OBD2 Tracker



ZigBee Traffic System



Trailer Locking



AI Power Meter



World Tracker

# Military Projects







Smart Armskote



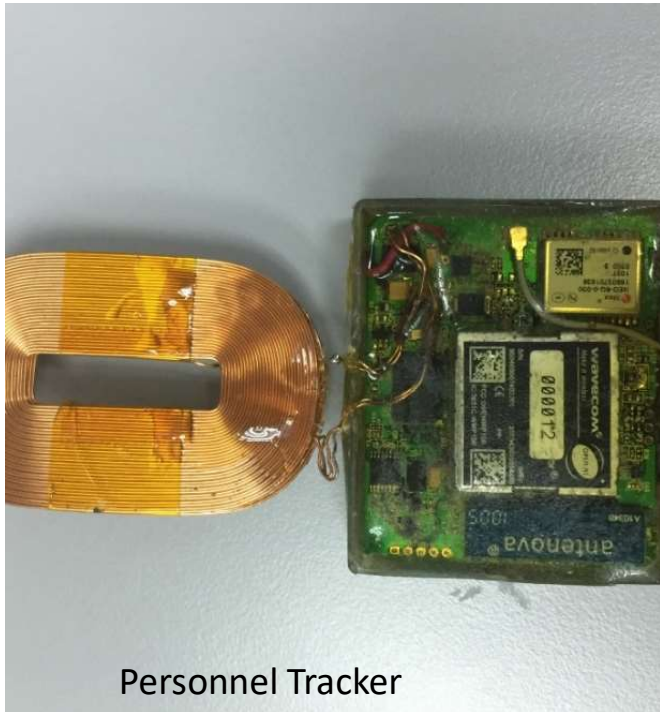
Mission Controller



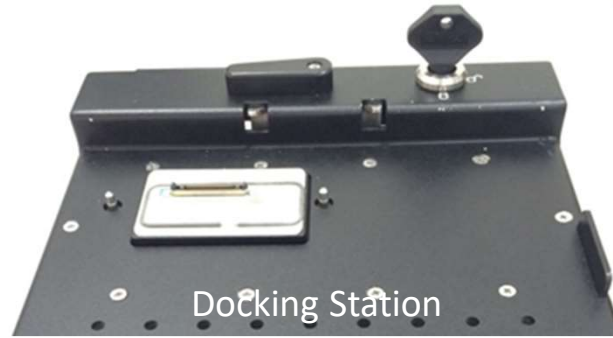
Audio Video UAV Transceiver

# Portfolio – R&D

---



Personnel Tracker



Docking Station



In Vehicle All In One Controller



Digital Dog Tag



Tank Embedded PC

Portfolio – Design Develop Produce

---



# Product – AI Edge Computer

# AI Predictive Maintenance Device (PMD)

- Predicts Turbine Generator Failure
- Predicts Oil and Gas Pumps Failure
- Saves machine down time



# AI (PMD) – Backend Software

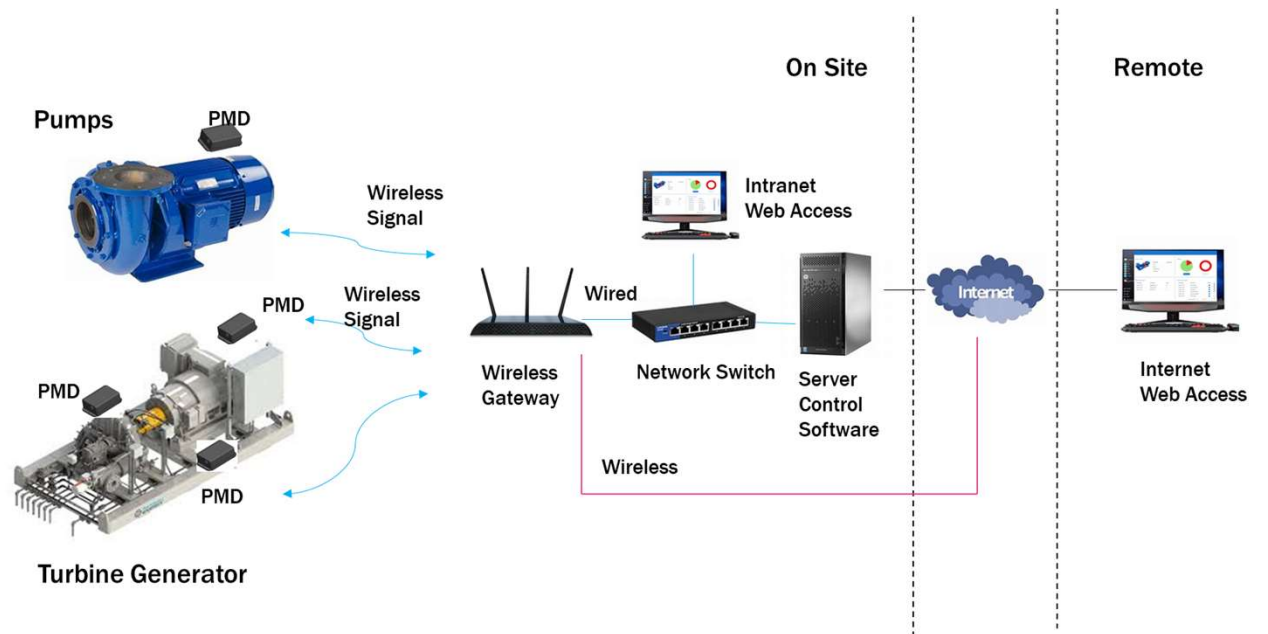
---

The screenshot displays a web application interface for 'Device 1'. The interface is organized into several sections:

- Device Info:** Features an image of a blue and red pump. To its right is a table with two columns: 'Properties' and 'Description'. The rows include 'Type', 'Model', 'Installed Date', and 'Last Maint.', each with an empty input field.
- Status:** Contains two large green circular indicators. The first is a solid circle with a '5%' label below it. The second is a ring with an 'ACTIVE' label below it.
- Measurements:** A table with three columns: 'Timestamp', 'Properties', and 'Value'. It lists three data points from March 16, 2019: Temperature (24), Vibration (5), and Sound (6).
- Announcements:** A table with three columns: 'Timestamp', 'Activities', and 'Details'. It lists five announcements from March 15 and 16, 2019, including names like Elvis Presley, Paul McCartney, Tom Scholz, Michael Jackson, and Bruce Springsteen. Each entry has a blue circular icon with an 'i' in the 'Details' column.

At the bottom of the 'Announcements' section, there is a pagination control showing 'Rows per page: 10' and '1-10 of 15'.

# AI (PMD) - Applications





# AI – Video Analytics Edge Computer

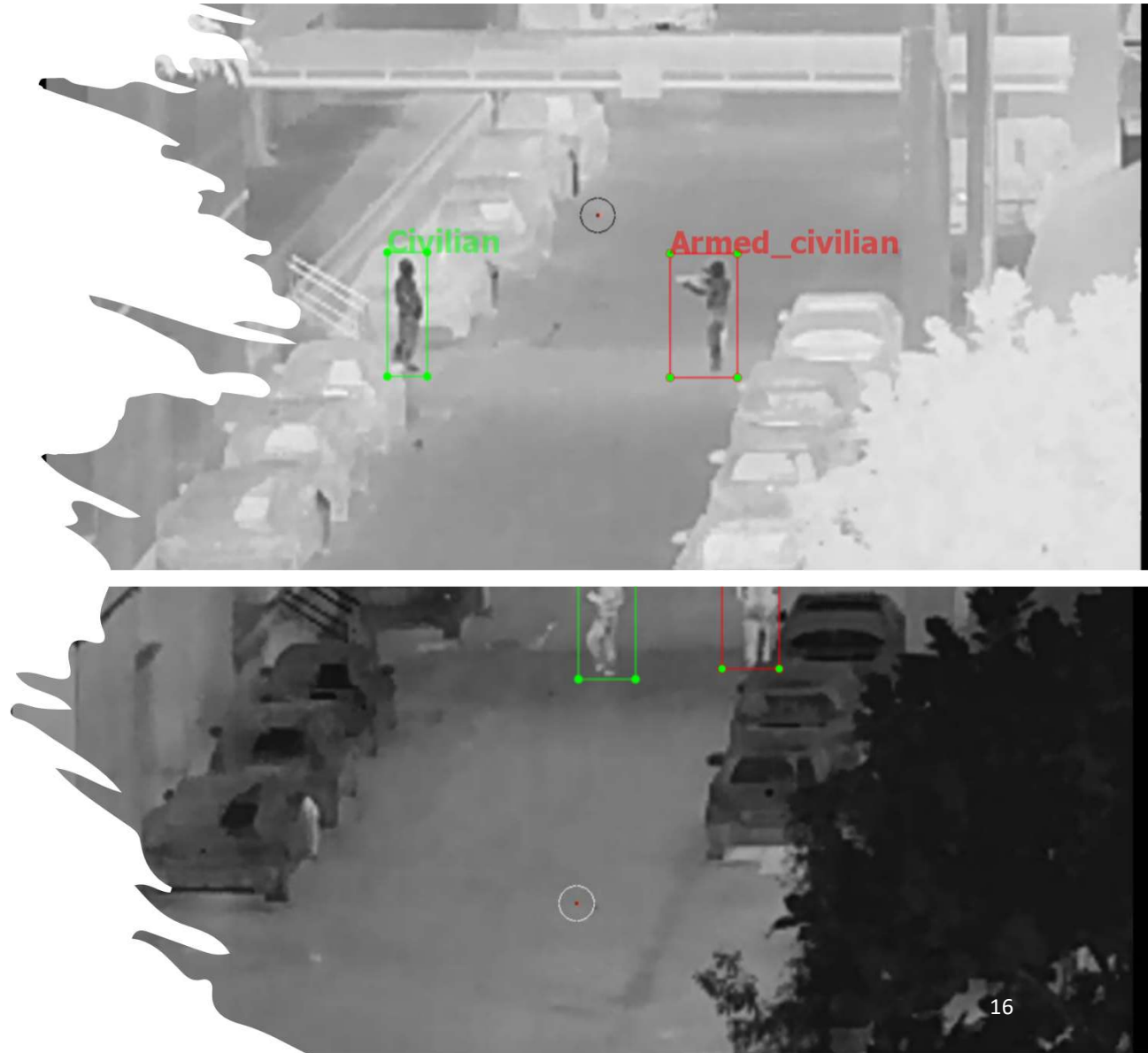
---

- Portable Hand-held Battery powered
- Recognition of Type of Vehicles
- Recognition of Civilians or Soldiers
- Armed Civilian Detection and Recognition
- Instant detection and recognition
- Can be trained to detect any objects or visual scenario:



# AI – Video Analytics Edge Computer

Thermal Camera Object and  
Scenario based Analysis

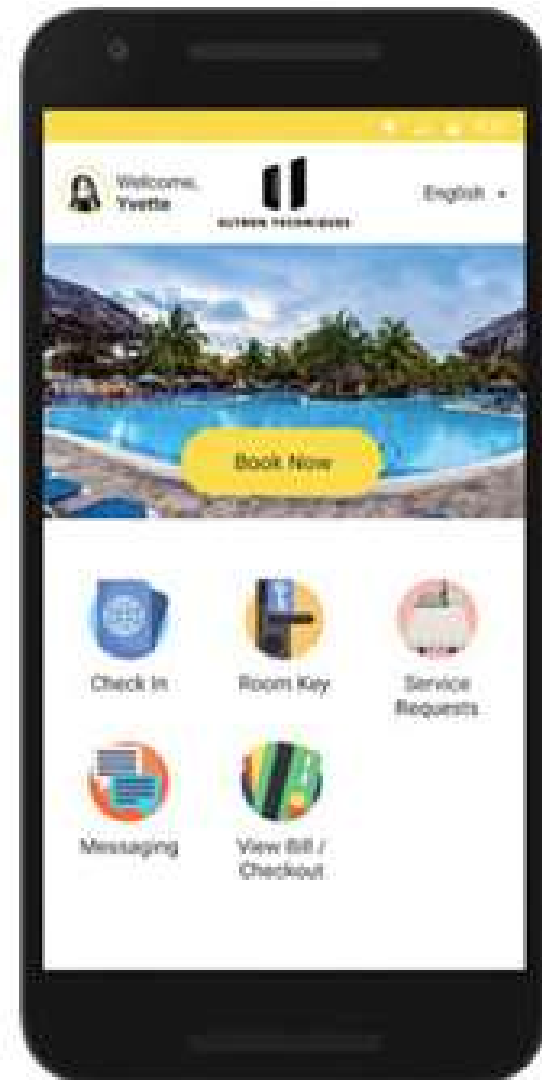




# Product - IQC

---

- A mobile application that transforms images into information through the use of artificial intelligence.
- This App enables housekeepers to perform self-assessment and make instant corrections among other features.
- <https://youtu.be/1zNB75PMCqQ>



# Product – Data Centre Rack Security Solutions

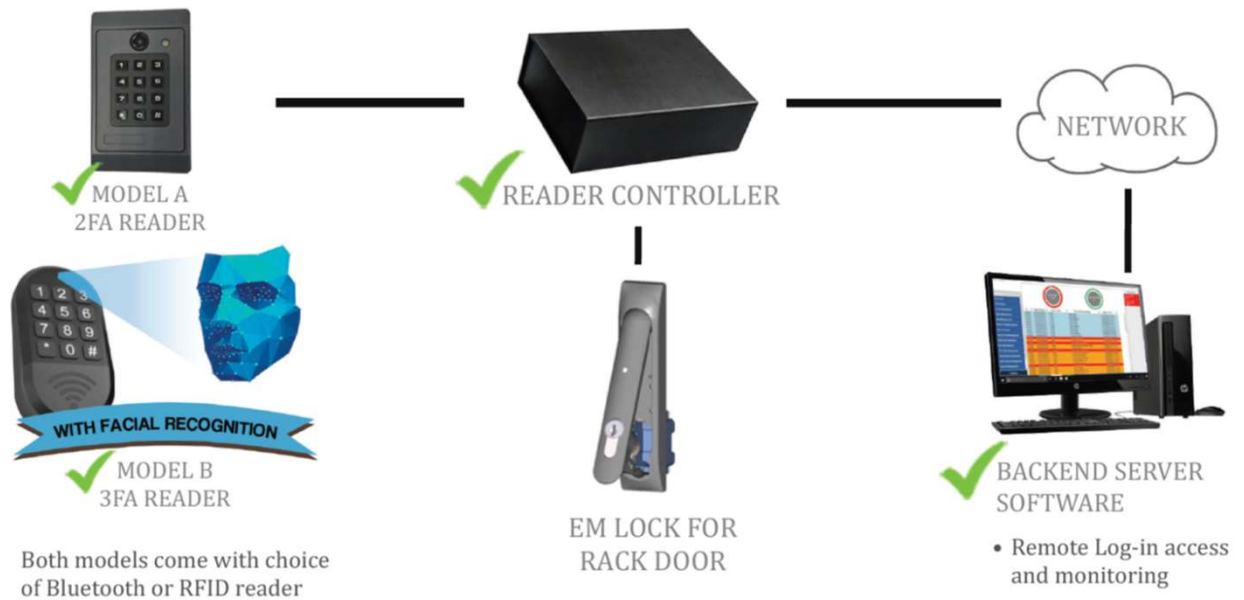
---



# Data Centre Smart Access System

---

## SYSTEM BLOCK DIAGRAM



# Our Clients

---



中国石油大庆油田  
DAQING OILFIELD OF CNPC



ULTRON TECHNIQUES



# The End

