



**Security Access System
&
Smart Door Lock
for
Residential Segment**



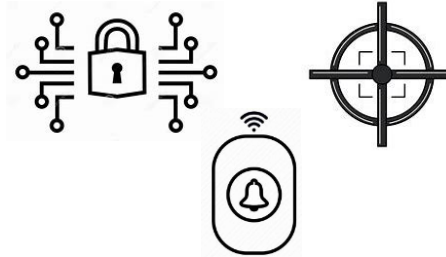
UNIQUE ADVANTAGE



**3D Facial
Recognition**
Access system



Wireless charging
Smart Lock for
main doors



Digital Lock, Smart
Viewer, Door-Bell,
All in one



Integrated Mobile
App
For Remote
Viewing & Control



IIPL SECURITY SOLUTION

Smart Lock
Main Doors



Visitor Viewer
House Unit



Lobby/Lift
Access Unit



Gate/Facilities
Unit



Guard House
Unit



Management
Office / Register
Station



IIPL SMART DOOR LOCK



- **Advance 3D Facial ID access**
 - Anti Spoofing
 - Works in poor lighting condition
 - Fast speed of recognition – 1s
- ★ • ***No replacement of battery needed*** (wireless charging)
- Door bell with viewing on LCD display on lock
- Remote Viewing on SAS Apps on Mobile
- Remote Opening on SAS Apps on Mobile
- Pin Pad Access
- RFID card Access
- Double locking function
- One touch unlock from inside



SAS SMART LOCK MOBILE APP

- Alert when door-bell press on smart lock
- Viewing of who is at the door
- Remote opening from App



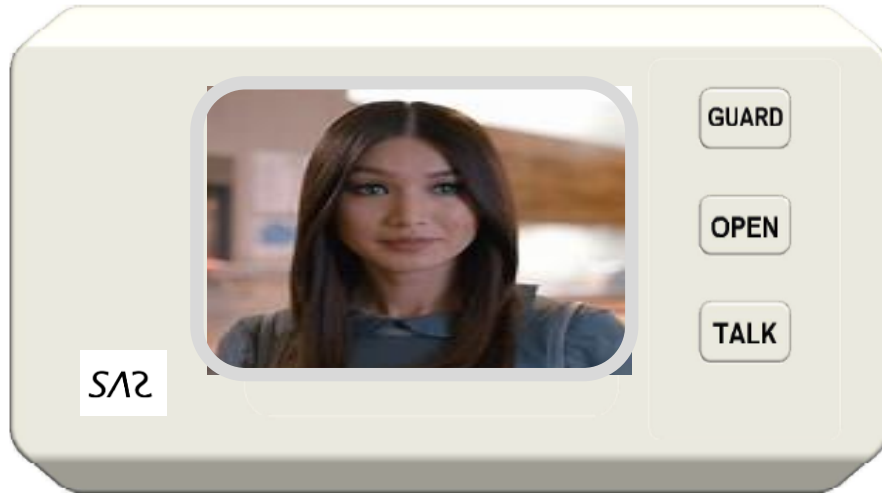
LOBBY ACCESS UNIT

- Installed at Lobby before lift access
- Means of Access
 - Advance 3D Facial Recognition
 - Anti Spoofing
 - Works in poor lighting condition
 - Fast Speed of recognition – 1s
 - Dial to Unit
 - RFID Card
 - Mobile Phone App (Optional)



HOUSE UNIT

- Installed in every household
- Video and Audio Comms with visitors and security
- Colour LCD Screen
- Open gates for visitors
- Other avantgarde design available



Picture for illustration only.

Other Possible Designs Selection with 7" LCD:





GATE/FACILITY ACCESS UNIT

- Installed at Facility Entrance/ Side Gate
- Means of Access
 - Advance Facial Recognition
 - Anti Spoofing
 - Works in poor lighting condition
 - RFID Card
 - Mobile Phone App (Optional)





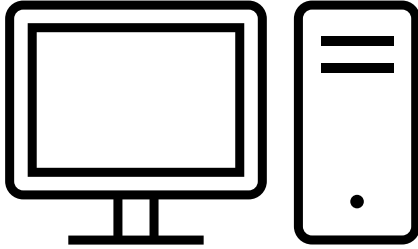
GUARD HOUSE UNIT

- Installed at Guard House
- Dial to Unit
- Talk with Residents (House Unit)





Gate Access Unit



PC with VMS
Registration Software

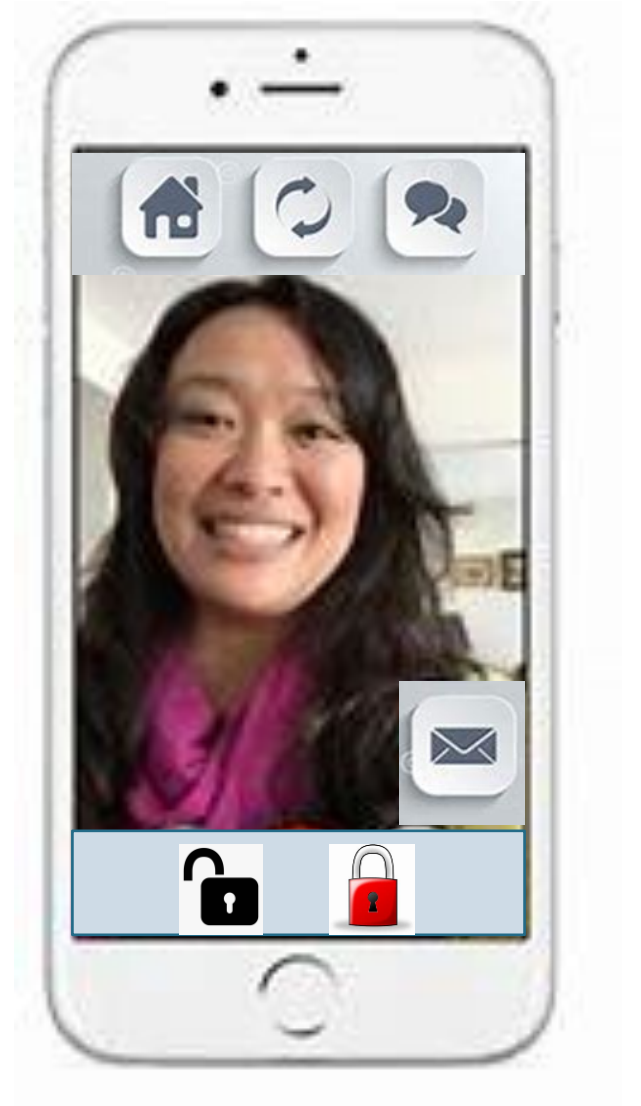
REGISTRATION STATION

- Installed at Management Office
- Register residents Facial ID
- Register RFID card for issuance to Residents.
- Register User Account for Resident Mobile App (Optional)

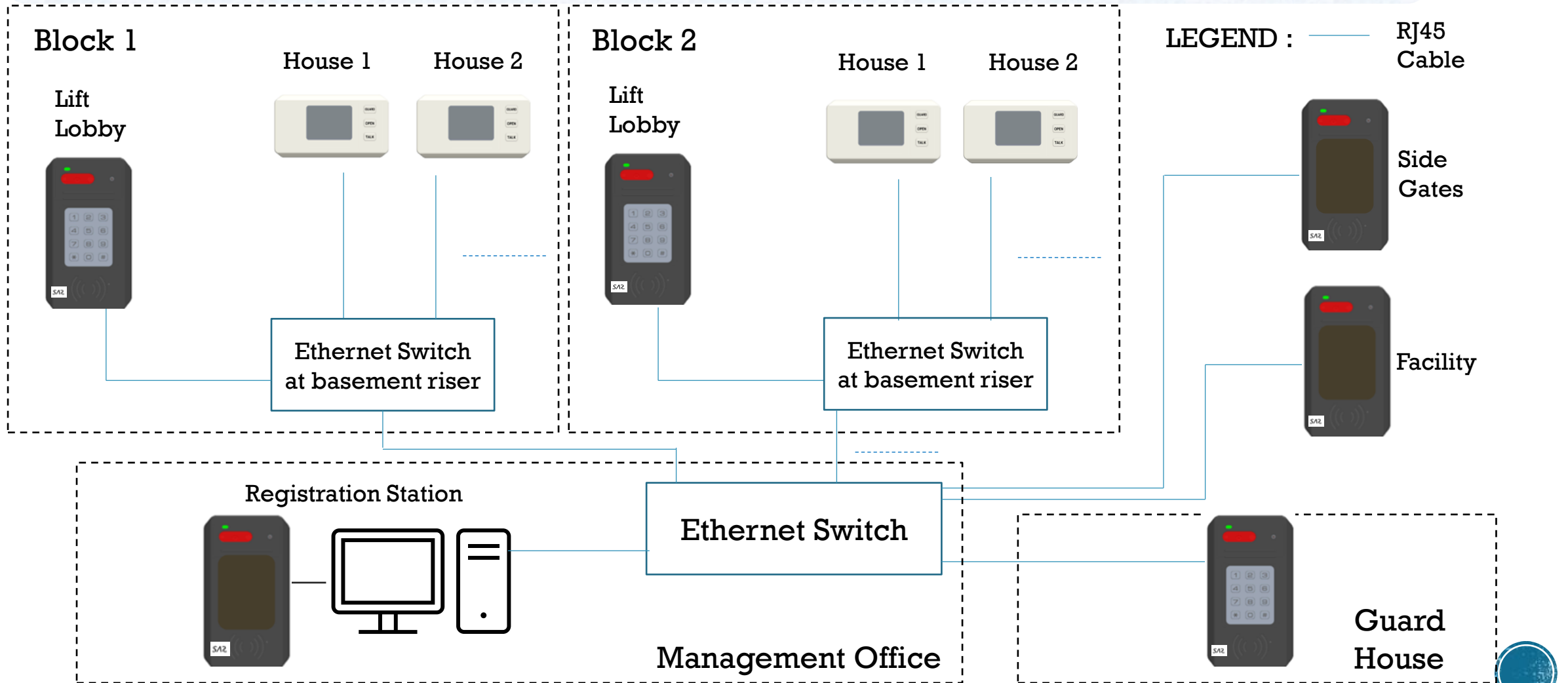


RESIDENT MOBILE APP

- Same App as SAS smart lock App
- Video and Call
 - User's mobile will get a secondary alert when call not answered at house unit
 - Each household can register and download the app
 - Successful activation for those household member who pre-register with Management
- Remote Opening
- **Pre-requisite**
 - **Access to internet at the Registration Station**



SECURE ACCESS SYSTEM LAYOUT



A close-up photograph of a hand using a computer mouse on a wooden desk. In the foreground, a large, three-dimensional '@' symbol made of cardboard stands upright. The background is softly blurred, showing a white mug and other office items.

CONTACT US

Email:

enquiry@iinnovationsgroup.com

Address:

1004 Toa Payoh North #05-15
Singapore 318995

Tel:

+65 6746 4333

